

---

# **QGIS Developers Guide**

*Versão 2.18*

**QGIS Project**

08/04/2019



<b>1</b>	<b>Padrão de codificação do QGIS</b>	<b>3</b>
1.1	Classes . . . . .	3
1.2	Qt Designer . . . . .	5
1.3	Arquivos C++ . . . . .	5
1.4	Nomes de Variáveis . . . . .	6
1.5	Tipos Enumerados . . . . .	6
1.6	Constantes Globais & Macros . . . . .	6
1.7	Qt Signals e Slots . . . . .	7
1.8	Editando . . . . .	7
1.9	Compatibilidade da API . . . . .	7
1.10	Estilo de Codificação . . . . .	8
1.11	Créditos para as contribuições . . . . .	10
<b>2</b>	<b>Acesso GIT</b>	<b>11</b>
2.1	Instalação . . . . .	11
2.2	Acessando o Repositório . . . . .	12
2.3	Check out a branch . . . . .	12
2.4	Fontes de documentação QGIS . . . . .	12
2.5	QGIS website sources . . . . .	13
2.6	GIT Documentation . . . . .	13
2.7	Development in branches . . . . .	13
2.8	Submitting Patches and Pull Requests . . . . .	14
2.9	Patch file naming . . . . .	15
2.10	Create your patch in the top level QGIS source dir . . . . .	15
2.11	Obtaining GIT Write Access . . . . .	16
<b>3</b>	<b>Teste de unidade</b>	<b>17</b>
3.1	O framework de testes do QGIS - uma visão geral . . . . .	17
3.2	Adding your unit test to CMakeLists.txt . . . . .	22
3.3	The ADD_QGIS_TEST macro explained . . . . .	22
3.4	Construindo sua unidade teste . . . . .	23
3.5	Execute seus testes . . . . .	23
<b>4</b>	<b>Getting up and running with QtCreator and QGIS</b>	<b>25</b>
4.1	Instalando QtCreator . . . . .	25
4.2	Preparando seu projeto . . . . .	25
4.3	Setting up your build environment . . . . .	27
4.4	Setting your run environment . . . . .	29
4.5	Running and debugging . . . . .	31
<b>5</b>	<b>HIG (Human Interface Guidelines)</b>	<b>33</b>
5.1	Autores . . . . .	34

<b>6</b>	<b>OGC Conformance Testing</b>	<b>35</b>
6.1	Setup of WMS 1.3 and WMS 1.1.1 conformance tests . . . . .	35
6.2	Projeto teste . . . . .	35
6.3	Executando o teste WMS 1.3.0 . . . . .	36
6.4	Executando o teste WMS 1.1.1 . . . . .	36
	<b>Índice</b>	<b>37</b>

Bem vindo às páginas sobre Desenvolvimento do QGIS. Aqui você encontrará regras, ferramentas e passos para contribuir fácil e eficientemente ao código do QGIS.



---

## Padrão de codificação do QGIS

---

- Classes
  - Nomes
  - Membros
  - Funções do acessório
  - Funções
  - Argumentos de função
  - Valores de retorno da função
- Qt Designer
  - Classes Geradas
  - Diálogos
- Arquivos C++
  - Nomes
  - Cabeçalho Padrão e Licença
- Nomes de Variáveis
- Tipos Enumerados
- Constantes Globais & Macros
- Qt Signals e Slots
- Editando
  - Tabulações
  - Indentação
  - Parênteses
- Compatibilidade da API
- Estilo de Codificação
  - Sempre que possível, generalize o código
  - Prefira Ter Constantes Antes nos Predicados
  - Espaços Podem Ser Seus Amigos
  - Coloque comandos em linhas separadas
  - Indente modificadores de acesso
  - Recomendações de Livros
- Créditos para as contribuições

Esses padrões devem ser seguidos por todos os desenvolvedores do QGIS

### 1.1 Classes

#### 1.1.1 Nomes

A classe em QGIS começa com Qgs e é formada usando camel case.

Exemplos:

- `QgsPoint`
- `QgsMapCanvas`
- `QgsRasterLayer`

### 1.1.2 Membros

Os nomes dos membros da classe começam com um m minúsculo e são formados usando maiúsculas e minúsculas.

- `mMapCanvas`
- `mCurrentExtent`

Todos os membros da classe devem ser privados. Membros públicos na classe são **FORTEMENTE** desencorajados. Os membros protegidos devem ser evitados quando o membro pode precisar ser acessado a partir de subclasses Python, uma vez que os membros protegidos não podem ser usados nas ligações Python.

Mutable static class member names should begin with a lower case s, but constant static class member names should be all caps:

- `sRefCount`
- `DEFAULT_QUEUE_SIZE`

### 1.1.3 Funções do acessório

Os valores dos membros da classe devem ser obtidos através das funções do acessório. A função deve ser nomeada sem um prefixo de obtenção. As funções de acessório para os dois membros privados acima seriam.

- `mapCanvas()`
- `currentExtent()`

Certifique-se de que os acessadores estejam corretamente marcados com “const”. Quando apropriado, isso pode exigir que as variáveis de membro do tipo de valor em cache sejam marcadas com “mutable”.

### 1.1.4 Funções

Os nomes das funções começam com uma letra minúscula e são formados usando maiúsculas e minúsculas. O nome da função deve transmitir algo sobre o propósito da função.

- `updateMapExtent()`
- `setUserOptions()`

Por consistência com a API QGIS existente e com a API Qt, abreviações devem ser evitadas. Por exemplo. `SetDestinationSize` ao invés de `setDestSize`, `setMaximumValue` ao invés de `setMaxVal`.

Os acrônimos também devem utilizar camel case para consistência. Por exemplo. `SetXml` ao invés de `setXML`.

### 1.1.5 Argumentos de função

Function arguments should use descriptive names. Do not use single letter arguments (e.g. `setColor( const QColor& color )` instead of `setColor( const QColor& c )`).

Preste muita atenção quando os argumentos devem ser passados por referência. A menos que os objetos dos argumentos sejam pequenos e copiados trivialmente (como objetos `QPoint`), eles devem ser passados por referência. Por consistência com a API Qt, mesmo os objetos compartilhados implicitamente são passados por referência (por exemplo, `setTitle( const QString & title)` ao invés de `setTitle( QString title)`).



## 1.1.6 Valores de retorno da função

Return small and trivially copied objects as values. Larger objects should be returned by const reference. The one exception to this is implicitly shared objects, which are always returned by value.

- `int maximumValue() const`
- `const LayerSet& layers() const`
- `QString title() const` (QString is implicitly shared)
- `QList< QgsMapLayer* > layers() const` (QList is implicitly shared)

## 1.2 Qt Designer

### 1.2.1 Classes Geradas

Classes QGIS geradas a partir dos arquivos Qt Designer (ui) devem ter o sufixo Base. Isto identifica a classe como uma classe base gerada.

Exemplos:

- `QgsPluginManagerBase`
- `QgsUserOptionsBase`

### 1.2.2 Diálogos

Todos os diálogos devem implementar dicas de contexto para todos os ícones da barra de ferramentas e outros widgets relevantes. Dicas de contexto auxiliam muito na descoberta de funcionalidade tanto para usuários novos quanto experientes.

Garanta que a ordem das tabulações para os widgets seja atualizada sempre que o layout de um diálogo for alterado.

## 1.3 Arquivos C++

### 1.3.1 Nomes

Arquivos C++ de código e cabeçalhos devem ter extensão `.cpp` e `.h`, respectivamente. Nomes de arquivos devem ser todos em minúsculas e, no caso de representar uma classe, ter o mesmo nome da classe.

Example: Class `QgsFeatureAttribute` source files are `qgsfeatureattribute.cpp` and `qgsfeatureattribute.h`

---

**Nota:** No caso de não ter ficado claro na declaração acima, o nome do arquivo combinar com o nome da classe significa, implicitamente, que cada classe deve ser declarada e implementada em seu próprio arquivo. isto torna muito mais fácil para recém-chegados identificar onde o código relativo para uma classe específica está localizado.

---

### 1.3.2 Cabeçalho Padrão e Licença

Cada arquivo de código fonte deve conter uma seção de cabeçalho padronizado conforme o exemplo a seguir:

```
/******  
  qgsfield.cpp - Describes a field in a layer or table  
-----  
Date : 01-Jan-2004  
Copyright: (C) 2004 by Gary E.Sherman  
Email: sherman at mrcc.com  
/******  
*  
* This program is free software; you can redistribute it and/or modify  
* it under the terms of the GNU General Public License as published by  
* the Free Software Foundation; either version 2 of the License, or  
* (at your option) any later version.  
*  
*****/
```

---

**Nota:** Este é um template para o Qt Creator no git. Para usá-lo, faça uma cópia local de doc/qt\_creator\_license\_template, ajuste o endereço de email e - se necessário - o nome e configure o QtCreator para usá-lo: *Tools* → *Options* → *C++* → *File Naming*.

---

## 1.4 Nomes de Variáveis

Nomes de variáveis locais devem começar com uma letra minúscula e serem formadas por maiúsculas e minúsculas. Não use prefixos como `my` ou `the`.

Exemplos:

- `mapCanvas`
- `currentExtent`

## 1.5 Tipos Enumerados

Tipos enumerados devem ser nomeados usando CamelCase iniciando com uma maiúscula. Exemplo:

```
enum UnitType  
{  
    Meters,  
    Feet,  
    Degrees,  
    UnknownUnit  
};
```

Não use nomes de tipos genéricos que causarão conflito com outros tipos. Exemplo. Use `UnknownUnit` ao invés de `Unknown`

## 1.6 Constantes Globais & Macros

Constantes globais e macros devem ser escritas em maiúsculas e separadas por sublinha. ex.:

```
const long GEOCRS_ID = 3344;
```

## 1.7 Qt Signals e Slots

Todos as conexões de signal/slot devem ser feitas utilizando as conexões “new style” disponíveis no Qt5. Mais informações sobre este requisito está disponível em [QEP #77](#).

Evite utilizar a auto conexão de slots do Qt (ex. aquelas nomeadas com `void on_mSpinBox_valueChanged`). Conexões automáticas são frágeis e tendem a se quebrar sem aviso se os diálogos são alterados.

## 1.8 Editando

Qualquer editor de texto/IDE pode ser utilizada para editar o código do QGIS desde que os seguintes requisitos sejam satisfeitos.

### 1.8.1 Tabulações

Ajuste seu editor para emular tabulações com espaços. As tabulações devem ser ajustadas para 2 espaços.

---

**Nota:** No vin isto é feito com `set expandtab ts=2`

---

### 1.8.2 Indentação

Source code should be indented to improve readability. There is a `scripts/prepare-commit.sh` that looks up the changed files and reindents them using `astyle`. This should be run before committing. You can also use `scripts/astyle.sh` to indent individual files.

As newer versions of `astyle` indent differently than the version used to do a complete reindentation of the source, the script uses an old `astyle` version, that we include in our repository (enable `WITH_ASTYLE` in `cmake` to include it in the build).

### 1.8.3 Parênteses

Parênteses devem iniciar na linha seguindo a expressão:

```
if(foo == 1)
{
    // do stuff
    ...
}
else
{
    // do something else
    ...
}
```

## 1.9 Compatibilidade da API

There is [API documentation](#) for C++.

Tentamos manter a API estável e com compatível com versões anteriores. Limpezas na API devem ser feitas de maneira similar ao código fonte Qt. ex.

```

class Foo
{
    public:
        /** This method will be deprecated, you are encouraged to use
         * doSomethingBetter() rather.
         * @deprecated doSomethingBetter()
         */
        Q_DECL_DEPRECATED bool doSomething();

        /** Does something a better way.
         * @note added in 1.1
         */
        bool doSomethingBetter();

    signals:
        /** This signal will be deprecated, you are encouraged to
         * connect to somethingHappenedBetter() rather.
         * @deprecated use somethingHappenedBetter()
         */
#ifdef Q_MOC_RUN
        Q_DECL_DEPRECATED
#endif
        bool somethingHappened();

        /** Something happened
         * @note added in 1.1
         */
        bool somethingHappenedBetter();
}

```

## 1.10 Estilo de Codificação

Aqui são descritas algumas dicas de programação que, esperamos, reduzirão erros, tempo de desenvolvimento e manutenção.

### 1.10.1 Sempre que possível, generalize o código

Se fizer cópia-cola do código, ou escrevendo a mesma coisa mais de uma vez, considere consolidar o código em uma função.

Isso vai:

- permitir que alterações sejam feitas em apenas um local ao invés de vários
- ajuda a prevenir inchaço no código
- tornar mais difícil para várias cópias irem se diferenciando longo do tempo, tornando mais difícil a compreensão e a manutenção para os outros

### 1.10.2 Prefira Ter Constantes Antes nos Predicados

Prefira colocar as constantes primeiro nso predicados.

`0 == value` ao invés de `value == 0`

Isso ajudará a impedir que os programadores acidentalmente usem “ = “ quando eles pretendem usar “ == “, o que pode introduzir erros de lógica muito sutis. O compilador gerará um erro se você usar acidentalmente “ = “ em vez de “ == “ para comparações, uma vez que as constantes não podem ser atribuídas valores inerentes.

### 1.10.3 Espaços Podem Ser Seus Amigos

Adicionar espaços entre operadores, declarações e funções torna mais fácil para os humanos analisar o código.

O que é mais fácil de ler, isto:

```
if (!a&&b)
```

ou isto:

```
if ( ! a && b )
```

---

**Nota:** `scripts/prepare-commit.sh` will take care of this.

---

### 1.10.4 Coloque comandos em linhas separadas

Ao ler o código, é fácil perder os comandos, se não estiverem no início da linha. Ao ler rapidamente o código, é comum ignorar linhas se não se parecem com o que você procura nos primeiros caracteres. Também é comum esperar um comando após um condicional como “if”.

Considere:

```
if (foo) bar();
```

```
baz(); bar();
```

É muito fácil perder parte do fluxo de controle. Em vez disso use

```
if (foo)
    bar();
```

```
baz();
```

```
bar();
```

### 1.10.5 Indente modificadores de acesso

Os modificadores de acesso estruturam uma classe em seções de API pública, API protegida e API privada. Os próprios modificadores de acesso agrupam o código nesta estrutura. Indente o modificador de acesso e as declarações.

```
class QgsStructure
{
    public:
        /**
         * Constructor
         */
        explicit QgsStructure();
}
```

### 1.10.6 Recomendações de Livros

- [Effective Modern C++](#), Scott Meyers
- [More Effective C++](#), Scott Meyers
- [Effective STL](#), Scott Meyers
- [Design Patterns](#), GoF

Você também deve realmente ler este artigo do Qt Quarterly sobre [designing Qt style \(APIs\)](#)

## 1.11 Créditos para as contribuições

Colaboradores de novas funções são encorajados em deixar as pessoas saberem sobre suas contribuições por:

- Adicionando uma nota ao changelog na primeira versão em que o código for incorporado, do tipo:  

```
This feature was funded by: Olmiomland http://olmiomland.ol  
This feature was developed by: Chuck Norris http://chucknorris.kr
```
- writing an article about the new feature on a blog, and add it to the QGIS planet <http://plugins.qgis.org/planet/>
- Adicionando seu nome em:
  - <https://github.com/qgis/QGIS/blob/master/doc/CONTRIBUTORS>
  - <https://github.com/qgis/QGIS/blob/master/doc/AUTHORS>
  - <https://github.com/qgis/QGIS/blob/master/doc/contributors.json>

---

## Acesso GIT

---

- Instalação
  - Instalar git para o GNU/Linux
  - Instalar git no Windows
  - Instalar git para OSX
- Acessando o Repositório
- Check out a branch
- Fontes de documentação QGIS
- QGIS website sources
- GIT Documentation
- Development in branches
  - Purpose
  - Procedure
  - Documentation on wiki
  - Testing before merging back to master
- Submitting Patches and Pull Requests
  - Pull Requests
    - \* Best practice for creating a pull request
    - \* Special labels to notify documentors
    - \* For merging a pull request
- Patch file naming
- Create your patch in the top level QGIS source dir
  - Getting your patch noticed
  - Due Diligence
- Obtaining GIT Write Access

Esta seção descreve como usar o repositório GIT QGIS. Antes de fazer isso, você precisa primeiro ter um git cliente instalado em seu sistema.

## 2.1 Instalação

### 2.1.1 Instalar git para o GNU/Linux

Debian based distro users can do:

```
sudo apt-get install git
```

### 2.1.2 Instalar git no Windows

Windows users can obtain `msys git` or use git distributed with `cygwin`.

### 2.1.3 Instalar git para OSX

The [git project](#) has a downloadable build of git. Make sure to get the package matching your processor (x86\_64 most likely, only the first Intel Macs need the i386 package).

Ao terminar de baixar, abra a imagem de disco e rode o instalador.

PPC/source note

The [git site](#) does not offer PPC builds. If you need a PPC build, or you just want a little more control over the installation, you need to compile it yourself.

Download the source from <http://git-scm.com/>. Unzip it, and in a Terminal cd to the source folder, then:

```
make prefix=/usr/local
sudo make prefix=/usr/local install
```

Se você não precisa de nenhum dos extras, Perl, Python ou TclTk (GUI), você pode desativá-los antes de executar com:

```
export NO_PERL=
export NO_TCLTK=
export NO_PYTHON=
```

## 2.2 Acessando o Repositório

Para clonar QGIS master:

```
git clone git://github.com/qgis/QGIS.git
```

## 2.3 Check out a branch

To check out a branch, for example the release 2.6.1 branch do:

```
cd QGIS
git fetch
git branch --track origin release-2_6_1
git checkout release-2_6_1
```

To check out the master branch:

```
cd QGIS
git checkout master
```

---

**Nota:** In QGIS we keep our most stable code in the current release branch. Master contains code for the so called 'unstable' release series. Periodically we will branch a release off master, and then continue stabilisation and selective incorporation of new features into master.

See the INSTALL file in the source tree for specific instructions on building development versions.

---

## 2.4 Fontes de documentação QGIS

If you're interested in checking out QGIS documentation sources:

```
git clone git@github.com:qgis/QGIS-Documentation.git
```

You can also take a look at the readme included with the documentation repo for more information.



## 2.5 QGIS website sources

If you're interested in checking out QGIS website sources:

```
git clone git@github.com:qgis/QGIS-Website.git
```

You can also take a look at the readme included with the website repo for more information.

## 2.6 GIT Documentation

See the following sites for information on becoming a GIT master.

- <http://gitref.org>
- <http://progit.org>
- <http://gitready.com>

## 2.7 Development in branches

### 2.7.1 Purpose

The complexity of the QGIS source code has increased considerably during the last years. Therefore it is hard to anticipate the side effects that the addition of a feature will have. In the past, the QGIS project had very long release cycles because it was a lot of work to reestablish the stability of the software system after new features were added. To overcome these problems, QGIS switched to a development model where new features are coded in GIT branches first and merged to master (the main branch) when they are finished and stable. This section describes the procedure for branching and merging in the QGIS project.

### 2.7.2 Procedure

- **Initial announcement on mailing list:** Before starting, make an announcement on the developer mailing list to see if another developer is already working on the same feature. Also contact the technical advisor of the project steering committee (PSC). If the new feature requires any changes to the QGIS architecture, a request for comment (RFC) is needed.

Create a branch: Create a new GIT branch for the development of the new feature.

```
git checkout -b newfeature
```

Now you can start developing. If you plan to do extensive on that branch, would like to share the work with other developers, and have write access to the upstream repo, you can push your repo up to the QGIS official repo by doing:

```
git push origin newfeature
```

---

**Nota:** If the branch already exists your changes will be pushed into it.

Rebase to master regularly: It is recommended to rebase to incorporate the changes in master to the branch on a regular basis. This makes it easier to merge the branch back to master later. After a rebase you need to `git push -f` to your forked repo.

---

**Nota:** Never `git push -f` to the origin repository! Only use this for your working branch.

---

```
git rebase master
```

### 2.7.3 Documentation on wiki

It is also recommended to document the intended changes and the current status of the work on a wiki page.

### 2.7.4 Testing before merging back to master

When you are finished with the new feature and happy with the stability, make an announcement on the developer list. Before merging back, the changes will be tested by developers and users.

## 2.8 Submitting Patches and Pull Requests

There are a few guidelines that will help you to get your patches and pull requests into QGIS easily, and help us deal with the patches that are sent to use easily.

### 2.8.1 Pull Requests

In general it is easier for developers if you submit GitHub pull requests. We do not describe Pull Requests here, but rather refer you to the [GitHub pull request documentation](#).

If you make a pull request we ask that you please merge master to your PR branch regularly so that your PR is always mergable to the upstream master branch.

If you are a developer and wish to evaluate the pull request queue, there is a very nice [tool that lets you do this from the command line](#)

Please see the section below on ‘getting your patch noticed’. In general when you submit a PR you should take the responsibility to follow it through to completion - respond to queries posted by other developers, seek out a ‘champion’ for your feature and give them a gentle reminder occasionally if you see that your PR is not being acted on. Please bear in mind that the QGIS project is driven by volunteer effort and people may not be able to attend to your PR instantaneously. If you feel the PR is not receiving the attention it deserves your options to accelerate it should be (in order of priority):

- Send a message to the mailing list ‘marketing’ your PR and how wonderful it will be to have it included in the code base.
- Send a message to the person your PR has been assigned to in the PR queue.
- Send a message to Marco Hugentobler (who manages the PR queue).
- Send a message to the project steering committee asking them to help see your PR incorporated into the code base.

#### Best practice for creating a pull request

- Always start a feature branch from current master.
- If you are coding a feature branch, don’t “merge” anything into that branch, rather rebase as described in the next point to keep your history clean.
- Before you create a pull request do `git fetch origin` and `git rebase origin/master` (given origin is the remote for upstream and not your own remote, check your `.git/config` or do `git remote -v | grep github.com/qgis`).
- You may do a `git rebase` like in the last line repeatedly without doing any damage (as long as the only purpose of your branch is to get merged into master).
- Attention: After a rebase you need to `git push -f` to your forked repo. **CORE DEVS: DO NOT DO THIS ON THE QGIS PUBLIC REPOSITORY!**

## Special labels to notify documentors

Besides common tags you can add to classify your PR, there are special ones you can use to automatically generate issue reports in QGIS-Documentation repository as soon as your pull request is merged:

- `[needs-docs]` to instruct doc writers to please add some extra documentation after a fix or addition to an already existing functionality.
- `[feature]` in case of new functionality. Filling a good description in your PR will be a good start.

Please devs use these labels (case insensitive) so doc writers have issues to work on and have an overview of things to do. BUT please also take time to add some text: either in the commit OR in the docs itself.

## For merging a pull request

Option A:

- click the merge button (Creates a non-fast-forward merge)

Option B:

- Checkout the pull request
- Test (Also required for option A, obviously)
- checkout master, `git merge pr/1234`
- Optional: `git pull --rebase`: Creates a fast-forward, no “merge commit” is made. Cleaner history, but it is harder to revert the merge.
- `git push` (NEVER EVER use the `-f` option here)

## 2.9 Patch file naming

If the patch is a fix for a specific bug, please name the file with the bug number in it e.g. `bug777fix.patch`, and attach it to the [original bug report in trac](#).

If the bug is an enhancement or new feature, its usually a good idea to create a [ticket in trac](#) first and then attach your patch.

## 2.10 Create your patch in the top level QGIS source dir

This makes it easier for us to apply the patches since we don't need to navigate to a specific place in the source tree to apply the patch. Also when I receive patches I usually evaluate them using merge, and having the patch from the top level dir makes this much easier. Below is an example of how you can include multiple changed files into your patch from the top level directory:

```
cd QGIS
git checkout master
git pull origin master
git checkout newfeature
git format-patch master --stdout > bug777fix.patch
```

This will make sure your master branch is in sync with the upstream repository, and then generate a patch which contains the delta between your feature branch and what is in the master branch.

### 2.10.1 Getting your patch noticed

QGIS developers are busy folk. We do scan the incoming patches on bug reports but sometimes we miss things. Don't be offended or alarmed. Try to identify a developer to help you - using the [Technical Resources](#) and contact them asking them if they can look at your patch. If you don't get any response, you can escalate your query to one of the Project Steering Committee members (contact details also available in the [Technical Resources](#)).

### 2.10.2 Due Diligence

QGIS is licensed under the GPL. You should make every effort to ensure you only submit patches which are unencumbered by conflicting intellectual property rights. Also do not submit code that you are not happy to have made available under the GPL.

## 2.11 Obtaining GIT Write Access

Write access to QGIS source tree is by invitation. Typically when a person submits several (there is no fixed number here) substantial patches that demonstrate basic competence and understanding of C++ and QGIS coding conventions, one of the PSC members or other existing developers can nominate that person to the PSC for granting of write access. The nominator should give a basic promotional paragraph of why they think that person should gain write access. In some cases we will grant write access to non C++ developers e.g. for translators and documentors. In these cases, the person should still have demonstrated ability to submit patches and should ideally have submitted several substantial patches that demonstrate their understanding of modifying the code base without breaking things, etc.

---

**Nota:** Since moving to GIT, we are less likely to grant write access to new developers since it is trivial to share code within github by forking QGIS and then issuing pull requests.

---

Always check that everything compiles before making any commits / pull requests. Try to be aware of possible breakages your commits may cause for people building on other platforms and with older / newer versions of libraries.

When making a commit, your editor (as defined in \$EDITOR environment variable) will appear and you should make a comment at the top of the file (above the area that says 'don't change this'). Put a descriptive comment and rather do several small commits if the changes across a number of files are unrelated. Conversely we prefer you to group related changes into a single commit.

---

## Teste de unidade

---

- O framework de testes do QGIS - uma visão geral
  - Criar um teste de unidade
- Adding your unit test to CMakeLists.txt
- The ADD\_QGIS\_TEST macro explained
- Construindo sua unidade teste
- Execute seus testes

Em novembro de 2007, passamos a exigir que todos os novos recursos que vão para a versão master passem a ser acompanhado de um teste de unidade. Inicialmente nós limitamos este requisito ao `qgis_core`, e vamos estender este requisito a outras partes da base de código conforme as pessoas estão familiarizados com os procedimentos de teste de unidade explicado nas seções que se seguem.

### 3.1 O framework de testes do QGIS - uma visão geral

O teste de unidade é realizada utilizando uma combinação de `QTestLib` (a biblioteca de testes Qt) e `CTest` (um quadro para compilar e executar testes como parte do CMake build process). Vamos dar uma visão geral do processo antes de eu entrar em detalhes:

- Existe algum código que você deseja testar, por exemplo uma classe ou função. Os defensores do Extreme Programming sugerem que o código não deve ser escrito ainda quando você começar a construir seus testes, e então conforme você estiver implementando seu código, você pode validar imediatamente cada nova parte funcional que você adicionar ao seu teste. Na prática, você provavelmente precisará escrever testes para código pré-existente no QGIS, já que estamos iniciando com um framework de testes depois que muita lógica já foi implementada.
- You create a unit test. This happens under `<QGIS Source Dir>/tests/src/core` in the case of the core lib. The test is basically a client that creates an instance of a class and calls some methods on that class. It will check the return from each method to make sure it matches the expected value. If any one of the calls fails, the unit will fail.
- You include `QTestLib` macros in your test class. This macro is processed by the Qt meta object compiler (moc) and expands your test class into a runnable application.
- You add a section to the `CMakeLists.txt` in your tests directory that will build your test.
- You ensure you have `ENABLE_TESTING` enabled in `ccmake / cmake` setup. This will ensure your tests actually get compiled when you type `make`.
- You optionally add test data to `<QGIS Source Dir>/tests/testdata` if your test is data driven (e.g. needs to load a shapefile). These test data should be as small as possible and wherever possible you should use the existing datasets already there. Your tests should never modify this data in situ, but rather may a temporary copy somewhere if needed.

- You compile your sources and install. Do this using normal `make && (sudo) make install` procedure.
- You run your tests. This is normally done simply by doing `make test` after the `make install` step, though I will explain other approaches that offer more fine grained control over running tests.

Right with that overview in mind, I will delve into a bit of detail. I've already done much of the configuration for you in CMake and other places in the source tree so all you need to do are the easy bits - writing unit tests!

### 3.1.1 Criar um teste de unidade

Creating a unit test is easy - typically you will do this by just creating a single `.cpp` file (not `.h` file is used) and implement all your test methods as public methods that return void. I'll use a simple test class for `QgsRasterLayer` throughout the section that follows to illustrate. By convention we will name our test with the same name as the class they are testing but prefixed with 'Test'. So our test implementation goes in a file called `testqgsrasterlayer.cpp` and the class itself will be `TestQgsRasterLayer`. First we add our standard copyright banner:

```

/*****
testqgsvectorfilewriter.cpp
-----
Date : Friday, Jan 27, 2015
Copyright: (C) 2015 by Tim Sutton
Email: tim@kartoza.com
*****/
*
* This program is free software; you can redistribute it and/or modify
* it under the terms of the GNU General Public License as published by
* the Free Software Foundation; either version 2 of the License, or
* (at your option) any later version.
*
*****/

```

Next we use start our includes needed for the tests we plan to run. There is one special include all tests should have:

```
#include <QtTest/QtTest>
```

Beyond that you just continue implementing your class as per normal, pulling in whatever headers you may need:

```

//Qt includes...
#include <QObject>
#include <QString>
#include <QApplication>
#include <QFileInfo>
#include <QDir>

//qgis includes...
#include <qgsrasterlayer.h>
#include <qgsrasterbandstats.h>
#include <qgsapplication.h>

```

Since we are combining both class declaration and implementation in a single file the class declaration comes next. We start with our doxygen documentation. Every test case should be properly documented. We use the doxygen `ingroup` directive so that all the `UnitTests` appear as a module in the generated Doxygen documentation. After that comes a short description of the unit test and the class must inherit from `QObject` and include the `Q_OBJECT` macro.

```

/** \ingroup UnitTests
 * This is a unit test for the QgsRasterLayer class.
 */

```

```
class TestQgsRasterLayer: public QObject
```

```
{
    Q_OBJECT
```

All our test methods are implemented as private slots. The QTest framework will sequentially call each private slot method in the test class. There are four ‘special’ methods which if implemented will be called at the start of the unit test (initTestCase), at the end of the unit test (cleanupTestCase). Before each test method is called, the init() method will be called and after each test method is called the cleanup() method is called. These methods are handy in that they allow you to allocate and cleanup resources prior to running each test, and the test unit as a whole.

```
private slots:
    // will be called before the first testfunction is executed.
    void initTestCase();
    // will be called after the last testfunction was executed.
    void cleanupTestCase(){};
    // will be called before each testfunction is executed.
    void init(){};
    // will be called after every testfunction.
    void cleanup();
```

Then come your test methods, all of which should take no parameters and should return void. The methods will be called in order of declaration. I am implementing two methods here which illustrates two types of testing. In the first case I want to generally test the various parts of the class are working, I can use a functional testing approach. Once again, extreme programmers would advocate writing these tests before implementing the class. Then as you work your way through your class implementation you iteratively run your unit tests. More and more test functions should complete successfully as your class implementation work progresses, and when the whole unit test passes, your new class is done and is now complete with a repeatable way to validate it.

Typically your unit tests would only cover the public API of your class, and normally you do not need to write tests for accessors and mutators. If it should happen that an accessor or mutator is not working as expected you would normally implement a regression test to check for this (see lower down).

```
//
// Functional Testing
//
/** Check if a raster is valid. */
void isValid();
// more functional tests here ...
```

Next we implement our regression tests. Regression tests should be implemented to replicate the conditions of a particular bug. For example I recently received a report by email that the cell count by rasters was off by 1, throwing off all the statistics for the raster bands. I opened a bug (ticket #832) and then created a regression test that replicated the bug using a small test dataset (a 10x10 raster). Then I ran the test and ran it, verifying that it did indeed fail (the cell count was 99 instead of 100). Then I went to fix the bug and reran the unit test and the regression test passed. I committed the regression test along with the bug fix. Now if anybody breaks this in the source code again in the future, we can immediately identify that the code has regressed. Better yet before committing any changes in the future, running our tests will ensure our changes don’t have unexpected side effects - like breaking existing functionality.

There is one more benefit to regression tests - they can save you time. If you ever fixed a bug that involved making changes to the source, and then running the application and performing a series of convoluted steps to replicate the issue, it will be immediately apparent that simply implementing your regression test before fixing the bug will let you automate the testing for bug resolution in an efficient manner.

To implement your regression test, you should follow the naming convention of regression<TicketID> for your test functions. If no redmine ticket exists for the regression, you should create one first. Using this approach allows the person running a failed regression test easily go and find out more information.

```
//
// Regression Testing
```

```
//
/** This is our second test case...to check if a raster
 * reports its dimensions properly. It is a regression test
 * for ticket #832 which was fixed with change r7650.
 */
void regression832();

// more regression tests go here ...
```

Finally in our test class declaration you can declare privately any data members and helper methods your unit test may need. In our case I will declare a `QgsRasterLayer *` which can be used by any of our test methods. The raster layer will be created in the `initTestCase()` function which is run before any other tests, and then destroyed using `cleanupTestCase()` which is run after all tests. By declaring helper methods (which may be called by various test functions) privately, you can ensure that they won't be automatically run by the `QTest` executable that is created when we compile our test.

```
private:
    // Here we have any data structures that may need to
    // be used in many test cases.
    QgsRasterLayer * mpLayer;
};
```

That ends our class declaration. The implementation is simply inlined in the same file lower down. First our `init` and `cleanup` functions:

```
void TestQgsRasterLayer::initTestCase()
{
    // init QGIS's paths - true means that all path will be inited from prefix
    QString qgisPath = QCoreApplication::applicationDirPath ();
    QgsApplication::setPrefixPath(qgisPath, TRUE);
#ifdef Q_OS_LINUX
    QgsApplication::setPkgDataPath(qgisPath + "../share/qgis");
#endif
    //create some objects that will be used in all tests...

    std::cout << "PrefixPATH: " << QgsApplication::prefixPath().toLocal8Bit().data() << std::endl;
    std::cout << "PluginPATH: " << QgsApplication::pluginPath().toLocal8Bit().data() << std::endl;
    std::cout << "PkgData PATH: " << QgsApplication::pkgDataPath().toLocal8Bit().data() << std::endl;
    std::cout << "User DB PATH: " << QgsApplication::qgisUserDbFilePath().toLocal8Bit().data() << s

    //create a raster layer that will be used in all tests...
    QString myFileName (TEST_DATA_DIR); //defined in CmakeLists.txt
    myFileName = myFileName + QDir::separator() + "tenbytenraster.asc";
    QFileInfo myRasterFileInfo ( myFileName );
    mpLayer = new QgsRasterLayer ( myRasterFileInfo.filePath(),
    myRasterFileInfo.completeBaseName() );
}

void TestQgsRasterLayer::cleanupTestCase()
{
    delete mpLayer;
}
```

The above `init` function illustrates a couple of interesting things.

1. I needed to manually set the QGIS application data path so that resources such as `srs.db` can be found properly.
2. Secondly, this is a data driven test so we needed to provide a way to generically locate the `tenbytenraster.asc` file. This was achieved by using the compiler define `TEST_DATA_PATH`. The define is created in the `CMakeLists.txt` configuration file under `<QGIS Source Root>/tests/CMakeLists.txt` and is available to all QGIS unit tests. If you need test data for



your test, commit it under <QGIS Source Root>/tests/testdata. You should only commit very small datasets here. If your test needs to modify the test data, it should make a copy of it first.

Qt also provides some other interesting mechanisms for data driven testing, so if you are interested to know more on the topic, consult the Qt documentation.

Next lets look at our functional test. The isValid() test simply checks the raster layer was correctly loaded in the initTestCase. QVERIFY is a Qt macro that you can use to evaluate a test condition. There are a few other use macros Qt provide for use in your tests including:

- *QCOMPARE ( actual, expected )*
- *QEXPECT\_FAIL ( dataIndex, comment, mode )*
- *QFAIL ( message )*
- *QFETCH ( type, name )*
- *QSKIP ( description, mode )*
- *QTEST ( actual, testElement )*
- *QTEST\_APPLESS\_MAIN ( TestClass )*
- *QTEST\_MAIN ( TestClass )*
- *QTEST\_NOOP\_MAIN ( )*
- *QVERIFY2 ( condition, message )*
- *QVERIFY ( condition )*
- *QWARN ( message )*

Some of these macros are useful only when using the Qt framework for data driven testing (see the Qt docs for more detail).

```
void TestQgsRasterLayer::isValid()
{
    QVERIFY ( mpLayer->isValid() );
}
```

Normally your functional tests would cover all the range of functionality of your classes public API where feasible. With our functional tests out the way, we can look at our regression test example.

Since the issue in bug #832 is a misreported cell count, writing our test is simply a matter of using QVERIFY to check that the cell count meets the expected value:

```
void TestQgsRasterLayer::regression832 ()
{
    QVERIFY ( mpLayer->getRasterXDim() == 10 );
    QVERIFY ( mpLayer->getRasterYDim() == 10 );
    // regression check for ticket #832
    // note getRasterBandStats call is base 1
    QVERIFY ( mpLayer->getRasterBandStats(1).elementCountInt == 100 );
}
```

With all the unit test functions implemented, there one final thing we need to add to our test class:

```
QTEST_MAIN(TestQgsRasterLayer)
#include "testqgsrasterlayer.moc"
```

The purpose of these two lines is to signal to Qt's moc that his is a QTest (it will generate a main method that in turn calls each test funtion.The last line is the include for the MOC generated sources. You should replace 'testqgsrasterlayer' with the name of your class in lower case.

## 3.2 Adding your unit test to CMakeLists.txt

Adding your unit test to the build system is simply a matter of editing the CMakeLists.txt in the test directory, cloning one of the existing test blocks, and then replacing your test class name into it. For example:

```
# QgsRasterLayer test
ADD_QGIS_TEST(rasterlayertest testqgsrasterlayer.cpp)
```

## 3.3 The ADD\_QGIS\_TEST macro explained

I'll run through these lines briefly to explain what they do, but if you are not interested, just do the step explained in the above section and section.

```
MACRO (ADD_QGIS_TEST testname testsrc)
SET(qgis_${testname}_SRCS ${testsrc} ${util_SRCS})
SET(qgis_${testname}_MOC_CPPS ${testsrc})
QT4_WRAP_CPP(qgis_${testname}_MOC_SRCS ${qgis_${testname}_MOC_CPPS})
ADD_CUSTOM_TARGET(qgis_${testname}moc ALL DEPENDS ${qgis_${testname}_MOC_SRCS})
ADD_EXECUTABLE(qgis_${testname} ${qgis_${testname}_SRCS})
ADD_DEPENDENCIES(qgis_${testname} qgis_${testname}moc)
TARGET_LINK_LIBRARIES(qgis_${testname} ${QT_LIBRARIES} qgis_core)
SET_TARGET_PROPERTIES(qgis_${testname}
PROPERTIES
# skip the full RPATH for the build tree
SKIP_BUILD_RPATHTRUE
# when building, use the install RPATH already
# (so it doesn't need to relink when installing)
BUILD_WITH_INSTALL_RPATH TRUE
# the RPATH to be used when installing
INSTALL_RPATH ${QGIS_LIB_DIR}
# add the automatically determined parts of the RPATH
# which point to directories outside the build tree to the install RPATH
INSTALL_RPATH_USE_LINK_PATH true)
IF (APPLE)
# For Mac OS X, the executable must be at the root of the bundle's executable folder
INSTALL(TARGETS qgis_${testname} RUNTIME DESTINATION ${CMAKE_INSTALL_PREFIX})
ADD_TEST(qgis_${testname} ${CMAKE_INSTALL_PREFIX}/qgis_${testname})
ELSE (APPLE)
INSTALL(TARGETS qgis_${testname} RUNTIME DESTINATION ${CMAKE_INSTALL_PREFIX}/bin)
ADD_TEST(qgis_${testname} ${CMAKE_INSTALL_PREFIX}/bin/qgis_${testname})
ENDIF (APPLE)
ENDMACRO (ADD_QGIS_TEST)
```

Lets look a little more in detail at the individual lines. First we define the list of sources for our test. Since we have only one source file (following the methodology I described above where class declaration and definition are in the same file) its a simple statement:

```
SET(qgis_${testname}_SRCS ${testsrc} ${util_SRCS})
```

Since our test class needs to be run through the Qt meta object compiler (moc) we need to provide a couple of lines to make that happen too:

```
SET(qgis_${testname}_MOC_CPPS ${testsrc})
QT4_WRAP_CPP(qgis_${testname}_MOC_SRCS ${qgis_${testname}_MOC_CPPS})
ADD_CUSTOM_TARGET(qgis_${testname}moc ALL DEPENDS ${qgis_${testname}_MOC_SRCS})
```

Next we tell cmake that it must make an executable from the test class. Remember in the previous section on the last line of the class implementation I included the moc outputs directly into our test class, so that will give it (among other things) a main method so the class can be compiled as an executable:

```
ADD_EXECUTABLE(qgis_${testname} ${qgis_${testname}_SRCS})
ADD_DEPENDENCIES(qgis_${testname} qgis_${testname}moc)
```

Next we need to specify any library dependencies. At the moment, classes have been implemented with a catch-all `QT_LIBRARIES` dependency, but I will be working to replace that with the specific Qt libraries that each class needs only. Of course you also need to link to the relevant qgis libraries as required by your unit test.

```
TARGET_LINK_LIBRARIES(qgis_${testname} ${QT_LIBRARIES} qgis_core)
```

Next I tell cmake to install the tests to the same place as the qgis binaries itself. This is something I plan to remove in the future so that the tests can run directly from inside the source tree.

```
SET_TARGET_PROPERTIES(qgis_${testname}
PROPERTIES
# skip the full RPATH for the build tree
SKIP_BUILD_RPATH TRUE
# when building, use the install RPATH already
# (so it doesn't need to relink when installing)
BUILD_WITH_INSTALL_RPATH TRUE
# the RPATH to be used when installing
INSTALL_RPATH ${QGIS_LIB_DIR}
# add the automatically determined parts of the RPATH
# which point to directories outside the build tree to the install RPATH
INSTALL_RPATH_USE_LINK_PATH true)
IF (APPLE)
# For Mac OS X, the executable must be at the root of the bundle's executable folder
INSTALL(TARGETS qgis_${testname} RUNTIME DESTINATION ${CMAKE_INSTALL_PREFIX})
ADD_TEST(qgis_${testname} ${CMAKE_INSTALL_PREFIX}/qgis_${testname})
ELSE (APPLE)
INSTALL(TARGETS qgis_${testname} RUNTIME DESTINATION ${CMAKE_INSTALL_PREFIX}/bin)
ADD_TEST(qgis_${testname} ${CMAKE_INSTALL_PREFIX}/bin/qgis_${testname})
ENDIF (APPLE)
```

Finally the above uses `ADD_TEST` to register the test with cmake / ctest. Here is where the best magic happens - we register the class with ctest. If you recall in the overview I gave in the beginning of this section, we are using both QtTest and CTest together. To recap, QtTest adds a main method to your test unit and handles calling your test methods within the class. It also provides some macros like `QVERIFY` that you can use as to test for failure of the tests using conditions. The output from a QtTest unit test is an executable which you can run from the command line. However when you have a suite of tests and you want to run each executable in turn, and better yet integrate running tests into the build process, the CTest is what we use.

### 3.4 Construindo sua unidade teste

To build the unit test you need only to make sure that `ENABLE_TESTS=true` in the cmake configuration. There are two ways to do this:

1. Run `cmake ..` (or `cmakesetup ..` under windows) and interactively set the `ENABLE_TESTS` flag to ON.
2. Add a command line flag to cmake e.g. `cmake -DENABLE_TESTS=true ..`

Other than that, just build QGIS as per normal and the tests should build too.

### 3.5 Execute seus testes

A maneira mais simples de executar os testes é como parte do seu processo de criação normal:

```
make && make install && make test
```

The make test command will invoke CTest which will run each test that was registered using the ADD\_TEST CMake directive described above. Typical output from make test will look like this:

```
Running tests...
Start processing tests
Test project /Users/tim/dev/cpp/qgis/build
## 13 Testing qgis_applicationtest***Exception: Other
## 23 Testing qgis_filewritertest *** Passed
## 33 Testing qgis_rasterlayertest*** Passed

## 0 tests passed, 3 tests failed out of 3
```

```
The following tests FAILED:
## 1- qgis_applicationtest (OTHER_FAULT)
Errors while running CTest
make: *** [test] Error 8
```

If a test fails, you can use the ctest command to examine more closely why it failed. Use the -R option to specify a regex for which tests you want to run and -V to get verbose output:

```
$ ctest -R appl -V
```

```
Start processing tests
Test project /Users/tim/dev/cpp/qgis/build
Constructing a list of tests
Done constructing a list of tests
Changing directory into /Users/tim/dev/cpp/qgis/build/tests/src/core
## 13 Testing qgis_applicationtest
Test command: /Users/tim/dev/cpp/qgis/build/tests/src/core/qgis_applicationtest
***** Start testing of TestQgsApplication *****
Config: Using QTest library 4.3.0, Qt 4.3.0
PASS : TestQgsApplication::initTestCase()
PrefixPATH: /Users/tim/dev/cpp/qgis/build/tests/src/core/./
PluginPATH: /Users/tim/dev/cpp/qgis/build/tests/src/core/./lib/qgis
PkgData PATH: /Users/tim/dev/cpp/qgis/build/tests/src/core/./share/qgis
User DB PATH: /Users/tim/.qgis/qgis.db
PASS : TestQgsApplication::getPaths()
PrefixPATH: /Users/tim/dev/cpp/qgis/build/tests/src/core/./
PluginPATH: /Users/tim/dev/cpp/qgis/build/tests/src/core/./lib/qgis
PkgData PATH: /Users/tim/dev/cpp/qgis/build/tests/src/core/./share/qgis
User DB PATH: /Users/tim/.qgis/qgis.db
QDEBUG : TestQgsApplication::checkTheme() Checking if a theme icon exists:
QDEBUG : TestQgsApplication::checkTheme()
/Users/tim/dev/cpp/qgis/build/tests/src/core/./share/qgis/themes/default/mIconProjectionDisabl
FAIL!: TestQgsApplication::checkTheme() '!myPixmap.isNull()' returned FALSE. ()
Loc: [/Users/tim/dev/cpp/qgis/build/tests/src/core/testqgsapplication.cpp(59)]
PASS : TestQgsApplication::cleanupTestCase()
Totals: 3 passed, 1 failed, 0 skipped
***** Finished testing of TestQgsApplication *****
-- Process completed
***Failed
```

```
## 0 tests passed, 1 tests failed out of 1
```

```
The following tests FAILED:
## 1- qgis_applicationtest (Failed)
Errors while running CTest
```

Well that concludes this section on writing unit tests in QGIS. We hope you will get into the habit of writing test to test new functionality and to check for regressions. Some aspects of the test system (in particular the CMakeLists.txt parts) are still being worked on so that the testing framework works in a truly platform way. I will update this document as things progress.

---

## Getting up and running with QtCreator and QGIS

---

- Instalando QtCreator
- Preparando seu projeto
- Setting up your build environment
- Setting your run environment
- Running and debugging

QtCreator is a newish IDE from the makers of the Qt library. With QtCreator you can build any C++ project, but it's really optimised for people working on Qt(4) based applications (including mobile apps). Everything I describe below assumes you are running Ubuntu 11.04 'Natty'.

### 4.1 Instalando QtCreator

Essa parte é fácil:

```
sudo apt-get install qtcreator qtcreator-doc
```

After installing you should find it in your gnome menu.

### 4.2 Preparando seu projeto

I'm assuming you have already got a local QGIS clone containing the source code, and have installed all needed build dependencies etc. There are detailed instructions for [git access](#) and [dependency installation](#).

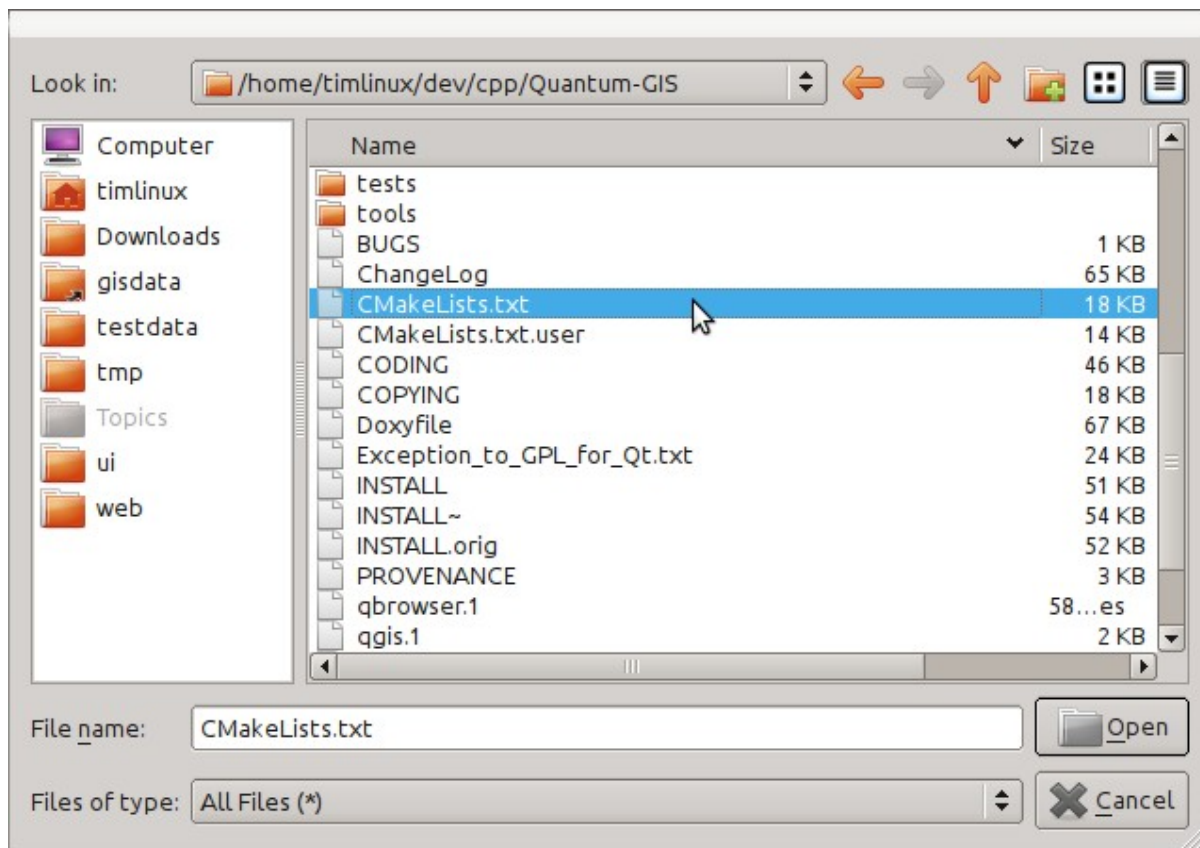
On my system I have checked out the code into `$HOME/dev/cpp/QGIS` and the rest of the article is written assuming that, you should update these paths as appropriate for your local system.

Ao abrir o QtCreator:

*Arquivo -> Abrir Arquivo ou Projeto\**

Then use the resulting file selection dialog to browse to and open this file:

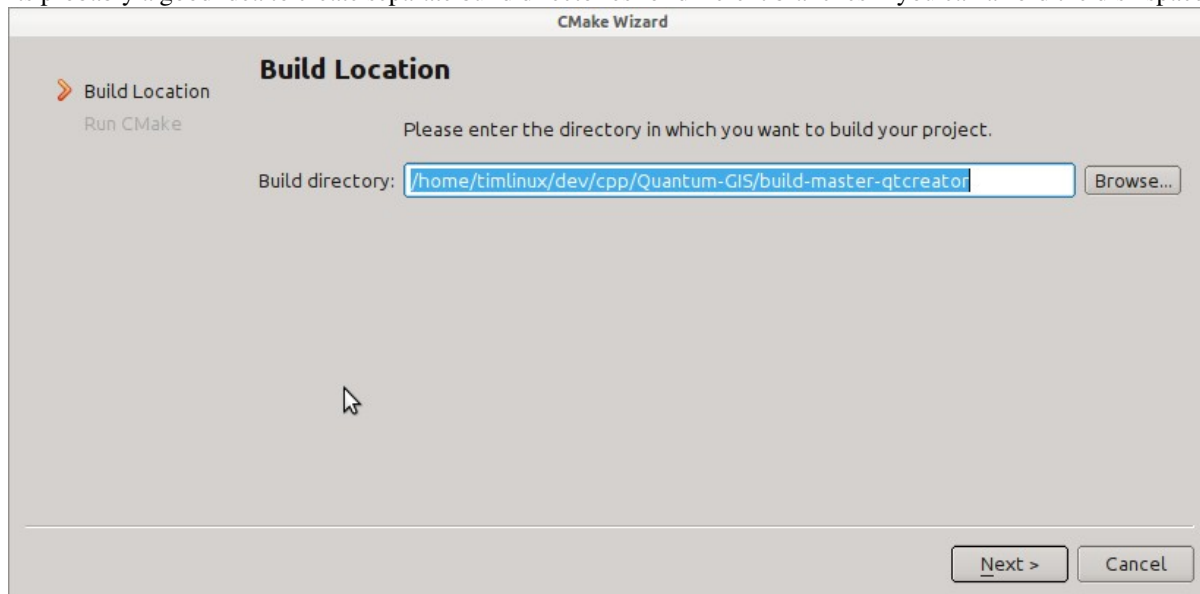
```
$HOME/dev/cpp/QGIS/CMakeLists.txt
```



Next you will be prompted for a build location. I create a specific build dir for QtCreator to work in under:

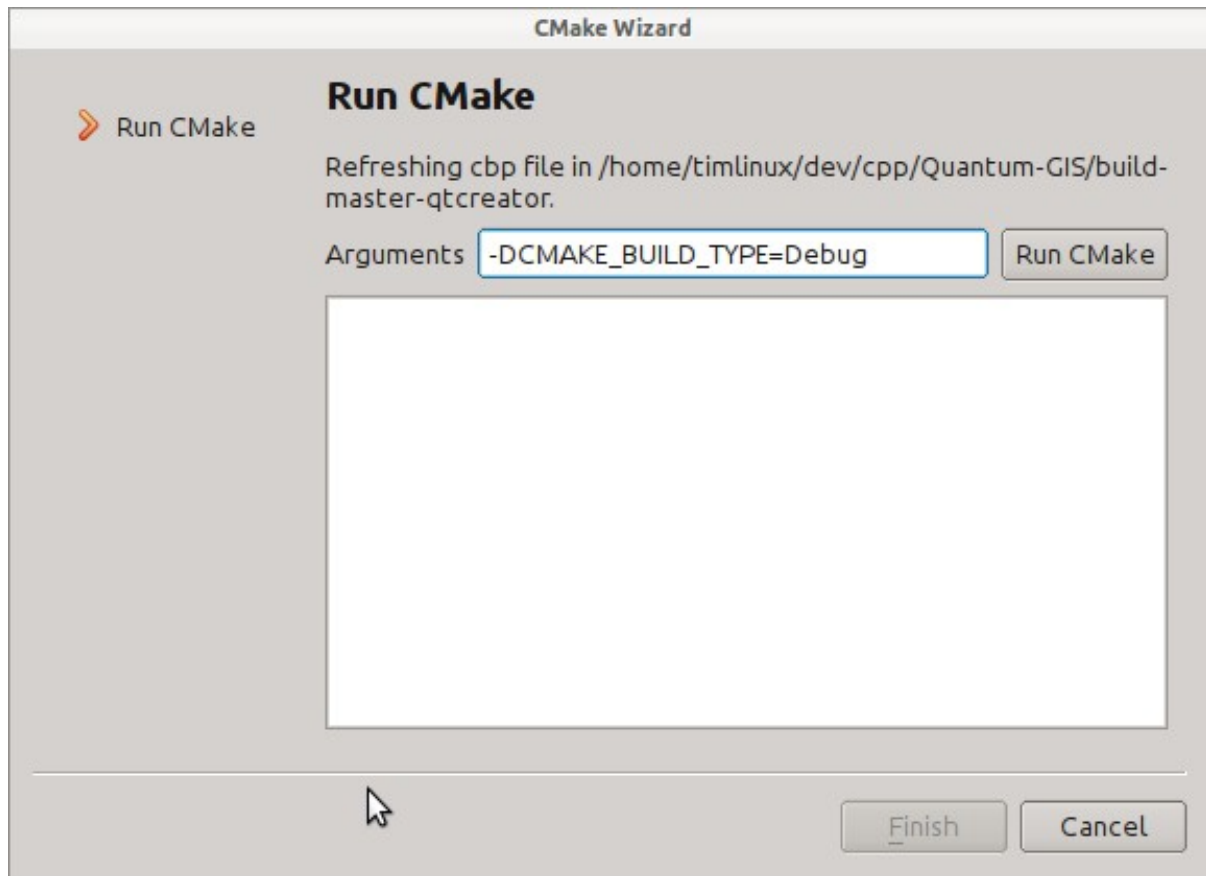
`$HOME/dev/cpp/QGIS/build-master-qtcreator`

Its probably a good idea to create separate build directories for different branches if you can afford the disk space.



Next you will be asked if you have any CMake build options to pass to CMake. We will tell CMake that we want a debug build by adding this option:

-DCMAKE\_BUILD\_TYPE=Debug



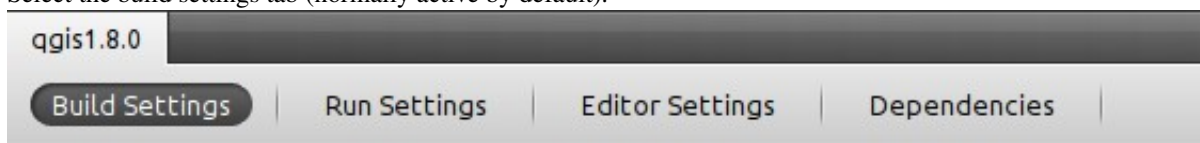
That's the basics of it. When you complete the Wizard, QtCreator will start scanning the source tree for autocompletion support and do some other housekeeping stuff in the background. We want to tweak a few things before we start to build though.

### 4.3 Setting up your build environment

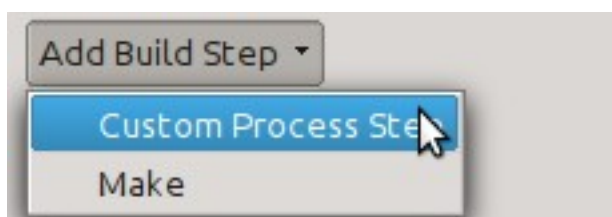
Click on the 'Projects' icon on the left of the QtCreator window.



Select the build settings tab (normally active by default).



We now want to add a custom process step. Why? Because QGIS can currently only run from an install directory, not its build directory, so we need to ensure that it is installed whenever we build it. Under 'Build Steps', click on the 'Add BuildStep' combo button and choose 'Custom Process Step'.



Agora vamos definir os seguintes detalhes:

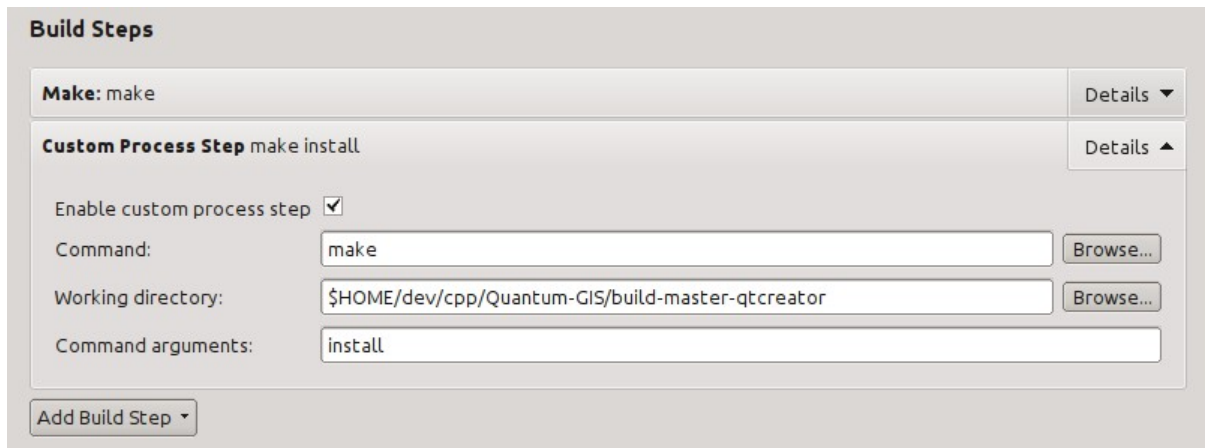
Enable custom process step: [yes]

Comando: make

Working directory: \$HOME/dev/cpp/QGIS/build-master-qtcreator

Argumentos de comando: install





You are almost ready to build. Just one note: QtCreator will need write permissions on the install prefix. By default (which I am using here) QGIS is going to get installed to `/usr/local/`. For my purposes on my development machine, I just gave myself write permissions to the `/usr/local` directory.

To start the build, click that big hammer icon on the bottom left of the window.

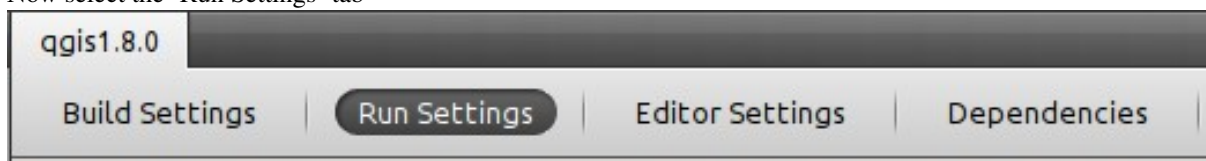


## 4.4 Setting your run environment

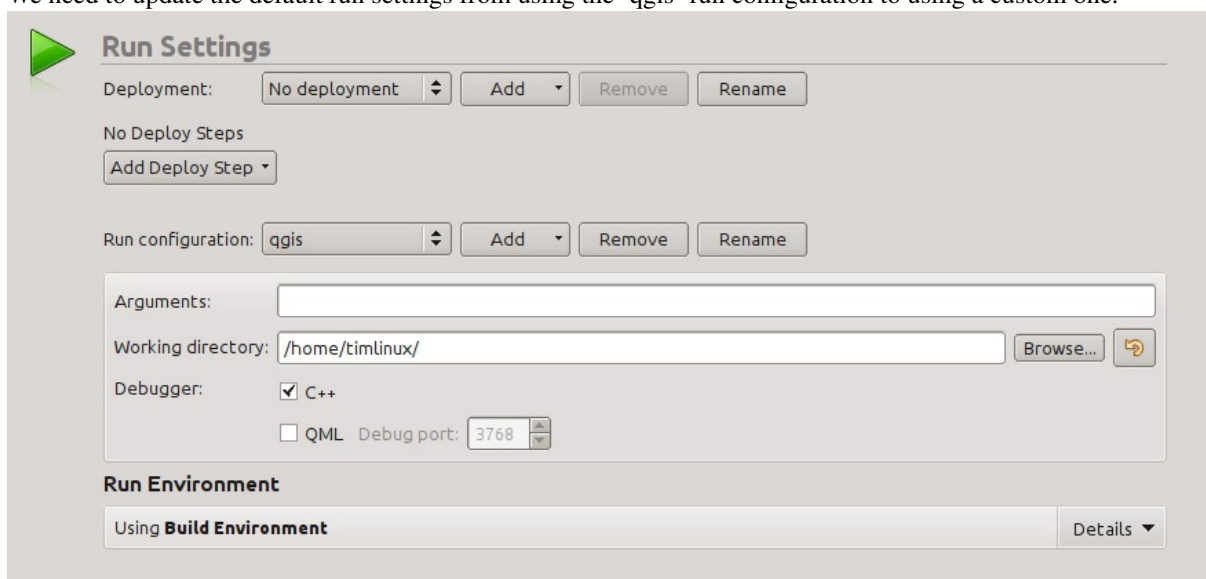
As mentioned above, we cannot run QGIS from directly in the build directly, so we need to create a custom run target to tell QtCreator to run QGIS from the install dir (in my case `/usr/local/`). To do that, return to the projects configuration screen.



Now select the 'Run Settings' tab



We need to update the default run settings from using the 'qgis' run configuration to using a custom one.



Do do that, click the 'Add v' combo button next to the Run configuration combo and choose 'Custom Executable' from the top of the list.



Now in the properties area set the following details:

Executável: /usr/local/bin/qgis

Argumentos :

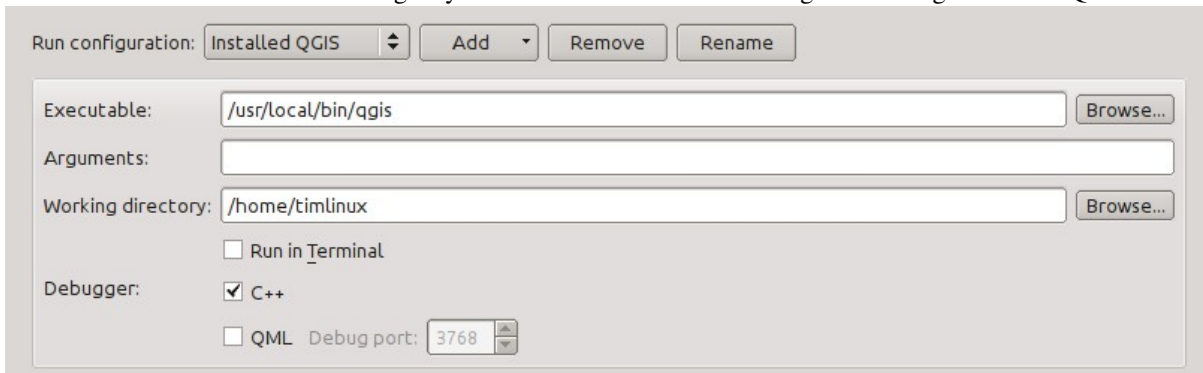
Working directory: \$HOME

Run in terminal: [no]

Debugger: C++ [yes]

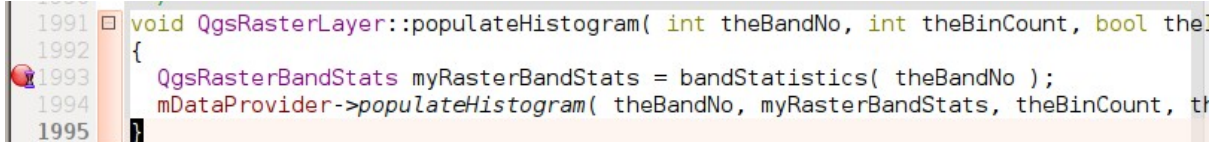
Qml [no]

Then click the 'Rename' button and give your custom executable a meaningful name e.g. 'Installed QGIS'



## 4.5 Running and debugging

Now you are ready to run and debug QGIS. To set a break point, simply open a source file and click in the left column.



Now launch QGIS under the debugger by clicking the icon with a bug on it in the bottom left of the window.





---

## HIG (Human Interface Guidelines)

---

In order for all graphical user interface elements to appear consistent and to allow the user to instinctively use dialogs, it is important that the following guidelines are followed in layout and design of GUIs.

1. Agrupar elementos relacionados usando caixas: Tente identificar elementos que podem ser agrupados em conjunto e, em seguida, use caixas com um rótulo para identificar o tópico desse grupo. Evite o uso de caixas com apenas um item dentro.
2. Capitalise first letter only in labels: Labels (and group box labels) should be written as a phrase with leading capital letter, and all remaining words written with lower case first letters
3. Não termine rótulos de itens e de caixas com dois pontos: a adição de dois pontos causa ruído visual e não fornece significado adicional; portanto, não os use. Uma exceção a essa regra é quando você tem dois rótulos próximos, por exemplo: Rótulo1 Complemento (Caminho:) Rótulo2 [/caminho/para/complemento]
4. Keep harmful actions away from harmless ones: If you have actions for ‘delete’, ‘remove’ etc, try to impose adequate space between the harmful action and innocuous actions so that the users is less likely to inadvertently click on the harmful action.
5. Use sempre um QDialogBox para botões como ‘OK’, ‘Cancelar’ etc : Usando uma caixa de botão você garante que a ordem dos botões ‘OK’ e ‘Cancelar’ etc, seja coerente com o sistema operacional / local /ambiente de trabalho que o usuário está usando.
6. Abas não devem ser justapostas. Se você usar abas, siga o estilo das abas usadas em QgsVectorLayerProperties / QgsProjectProperties etc. ,ou seja, abas na parte superior com imagens de 22x22.
7. Widget stacks should be avoided if at all possible. They cause problems with layouts and inexplicable (to the user) resizing of dialogs to accommodate widgets that are not visible.
8. Try to avoid technical terms and rather use a laymans equivalent e.g. use the word ‘Transparency’ rather than ‘Alpha Channel’ (contrived example), ‘Text’ instead of ‘String’ and so on.
9. Use iconografia consistente. Se você precisar de uma imagem ou elementos de imagem, entre em contato com Robert Szczepanek na lista de discussão para obter assistência.
10. Place long lists of widgets into scroll boxes. No dialog should exceed 580 pixels in height and 1000 pixels in width.
11. Separar as opções avançadas das básicas. Os usuários iniciantes devem acessar rapidamente os itens necessários para atividades básicas sem se preocupar com a complexidade dos recursos avançados. Os recursos avançados devem estar localizados abaixo de uma linha divisória ou colocados em uma guia separada.
12. Não adicione opções para ter muitas outras opções. Esforce-se para manter a interface do usuário minimalista e usar padrões coerentes.
13. If clicking a button will spawn a new dialog, an ellipsis (...) should be suffixed to the button text.

## 5.1 Autores

- Tim Sutton (autor e editor)
- Gary Sherman
- Marco Hugentobler
- Matthias Kuhn

---

## OGC Conformance Testing

---

- Setup of WMS 1.3 and WMS 1.1.1 conformance tests
- Projeto teste
- Executando o teste WMS 1.3.0
- Executando o teste WMS 1.1.1

The Open Geospatial Consortium (OGC) provides tests which can be run free of charge to make sure a server is compliant with a certain specification. This chapter provides a quick tutorial to setup the WMS tests on an Ubuntu system. A detailed documentation can be found at the [OGC website](#).

### 6.1 Setup of WMS 1.3 and WMS 1.1.1 conformance tests

```
sudo apt-get install openjdk-8-jdk maven
cd ~/src
git clone https://github.com/opengeospatial/teamengine.git
cd teamengine
mvn install
mkdir ~/TE_BASE
export TE_BASE=~/.TE_BASE
unzip -o ./teamengine-console/target/teamengine-console-4.11-SNAPSHOT-base.zip -d $TE_BASE
mkdir ~/te-install
unzip -o ./teamengine-console/target/teamengine-console-4.11-SNAPSHOT-bin.zip -d ~/te-install
```

#### Baixe e instale o teste WMS 1.3.0

```
cd ~/src
git clone https://github.com/opengeospatial/ets-wms13.git
cd ets-wms13
mvn install
```

#### Baixe e instale o teste WMS 1.1.1

```
cd ~/src
git clone https://github.com/opengeospatial/ets-wms11.git
cd ets-wms11
mvn install
```

### 6.2 Projeto teste

Para os testes WMS, os dados podem ser baixados e carregados em um projeto QGIS:

```
wget http://cite.opengeospatial.org/teamengine/about/wms/1.3.0/site/data-wms-1.3.0.zip
unzip data-wms-1.3.0.zip
```

Then create a QGIS project according to the description in <http://cite.opengeospatial.org/teamengine/about/wms/1.3.0/site/>. To run the tests, we need to provide the GetCapabilities URL of the service later.

### 6.3 Executando o teste WMS 1.3.0

```
export PATH=/usr/lib/jvm/java-8-openjdk-amd64/bin:$PATH
export TE_BASE=$HOME/TE_BASE
export JAVA_HOME=/usr/lib/jvm/java-8-openjdk-amd64
cd ~/te-install
./bin/unix/test.sh -source=$HOME/src/ets-wms13/src/main/scripts/ctl/main.xml
```

### 6.4 Executando o teste WMS 1.1.1

```
export PATH=/usr/lib/jvm/java-8-openjdk-amd64/bin:$PATH
export TE_BASE=$HOME/TE_BASE
export ETS_SRC=$HOME/ets-resources
export JAVA_HOME=/usr/lib/jvm/java-8-openjdk-amd64
cd ~/te-install
./bin/unix/test.sh -source=$HOME/src/ets-wms11/src/main/scripts/ctl/wms.xml
```



OGC Conformance Testing, 34